

January 23, 2024

FLAMBORO MACHINE SHOP LTD.

952 Brock Road, RR#4
Dundas, Ontario L9H 5E4

Attention: Darren McLellan / 905.659.0404 / darren@flamboromachineshop.ca

MAXCUT 117HTY MILL-TURNING CENTRE

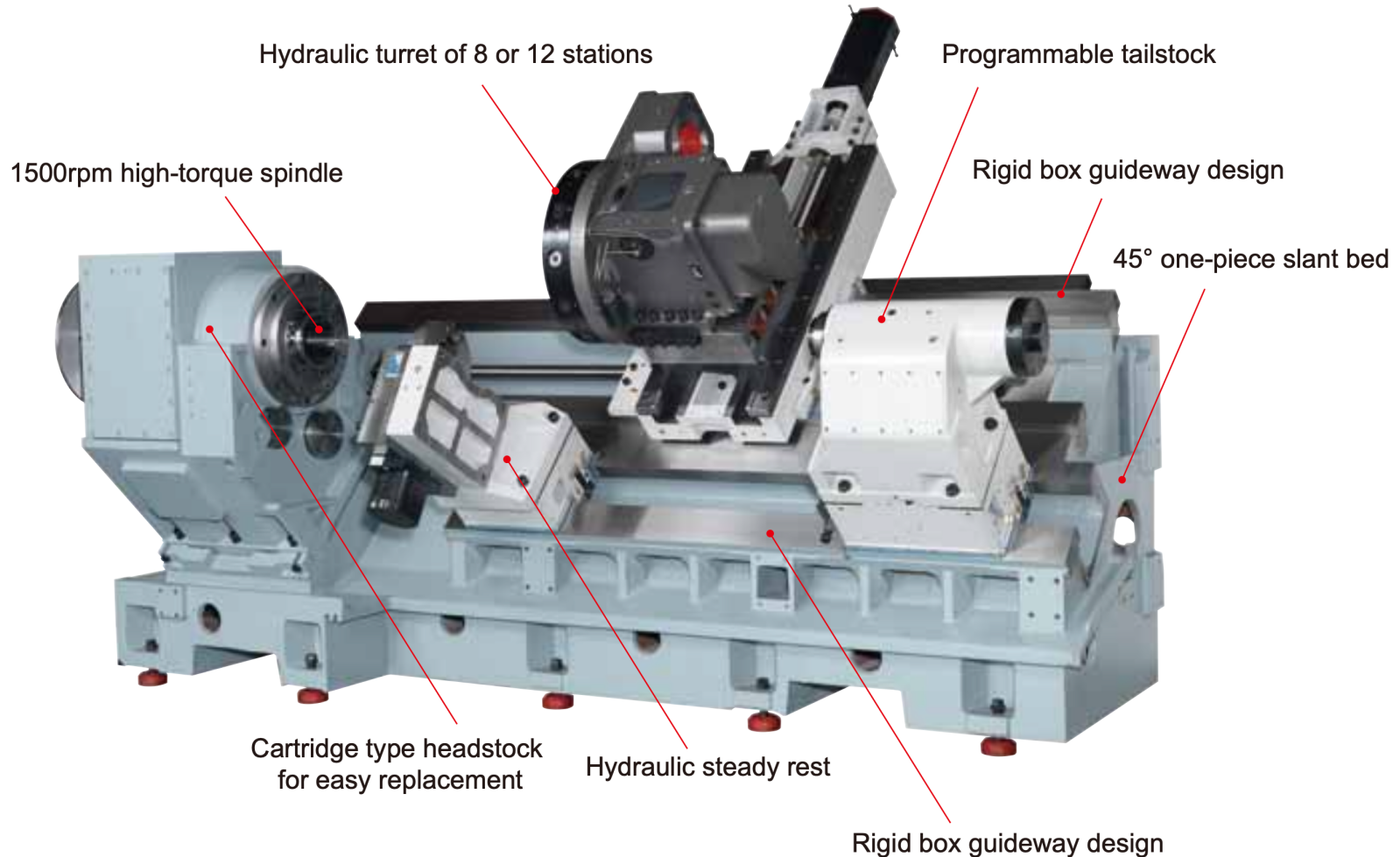
Dear Darren,

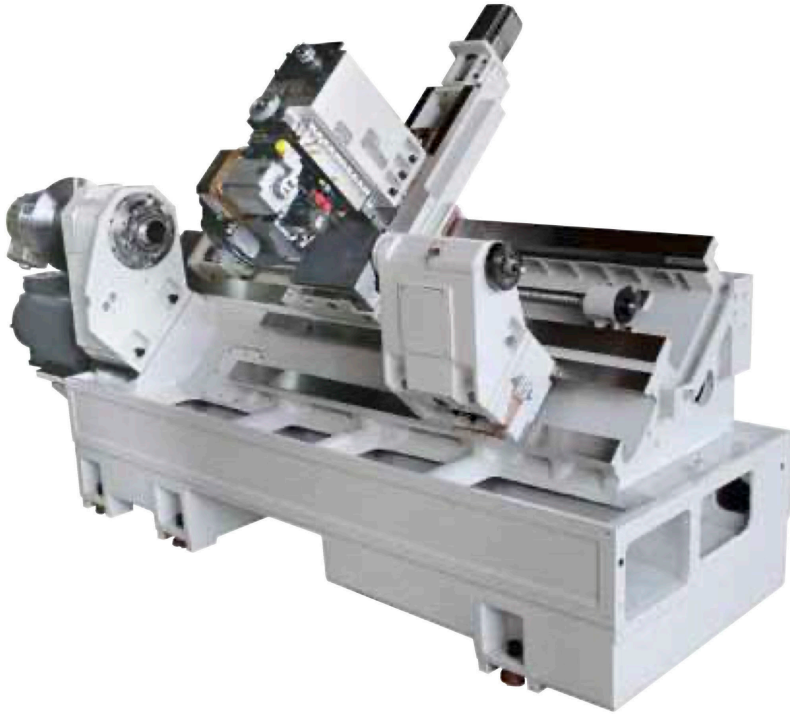
Thank you for the opportunity to quote the **MAXCUT 117HTY MILL-TURNING CENTRE** for your shop in Dundas, Ontario.



MAXCUT 117HTY MILL-TURNING CENTRE FEATURES

Large-sized high performance slant-bed lathe for heavy duty cutting. The Maxcut 117HT is equipped with a two-step gearbox type spindle unit to offer high torque output. The cutting length range is from 1.3m up to 4m. C-axis and Y axis provide multi-task machining and one set-up for easy operation.





CAPACITY

swing over bed	900mm
swing over cross slide	700mm
maximum turning diameter	700mm
maximum turning length	3800mm
bar capacity	117mm
slant bed angle	45°



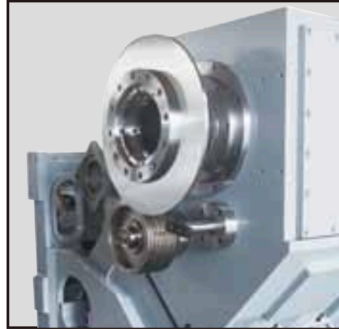
Live tooling

- 12 stations of VDI type disc or BMT 75 or 85 type.
- The Y-axis with live tooling turret enhances multi-tasking machining and eliminates secondary operation.



Y-axis

Provide perpendicular motion to the X-axis to enable diverse and off-center machining for complicated parts.



C-axis

C axis with hydraulic braking system provides spindle angle indexing and superior machining performance.

TRAVEL

X-axis	385mm (350 + 35mm)
Y-axis	±100mm
Z-axis	4000mm
C-axis	360°

SPINDLE

maximum speed	1500 rpm
spindle nose	A2-11
spindle bore diameter	155mm
drive method	2-speed gear box
hydraulic 3-jaw chuck size	450mm
maximum power	37kW

TOOL TURRET

Number of stations/positions	12
turning tool square shank	32mm
boring bar capacity	Ø60mm
live tool holder interface	BMT-75
live spindle power	3.7kW
maximum live spindle speed	4000 rpm

TAILSTOCK

type	programmable
tailstock travel	3800mm
quill travel	150mm
quill diameter	150mm
quill inside taper	MT#5

AXES

X-axis ball screw	Ø40mm x P10 x C3
X-axis rapid feed	20m/minute
Y-axis ball screw	Ø40mm x P10 x C3
Y-axis rapid feed	20m/minute
Z-axis ball screw	Ø50mm x P12 x C3
Z-axis rapid feed	20m/minute

ACCURACY

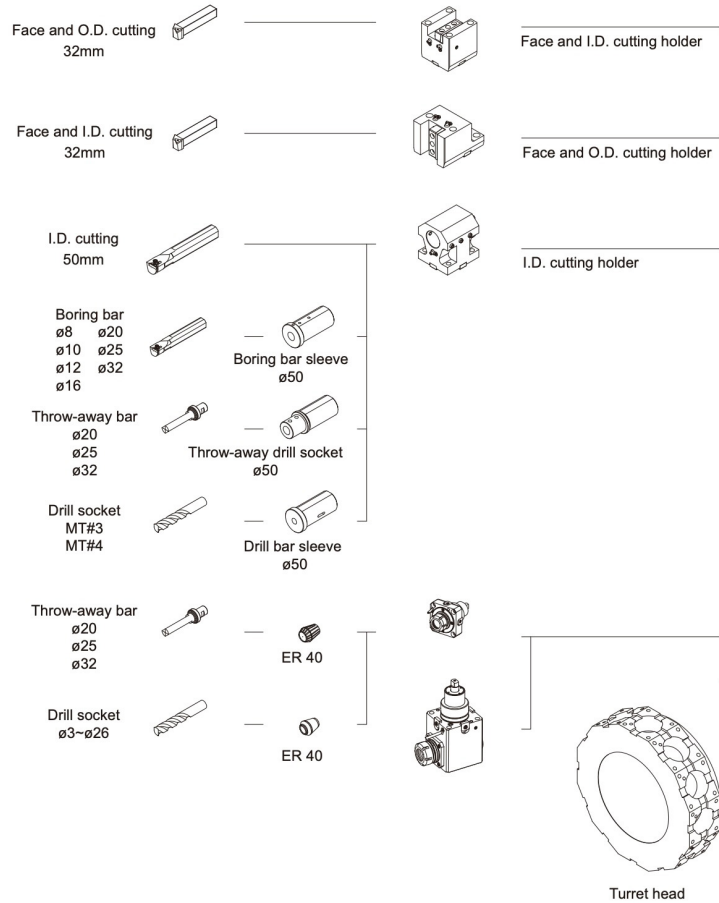
positioning accuracy	±0.005/300mm
repeatability	0.005mm

MISCELLANEOUS

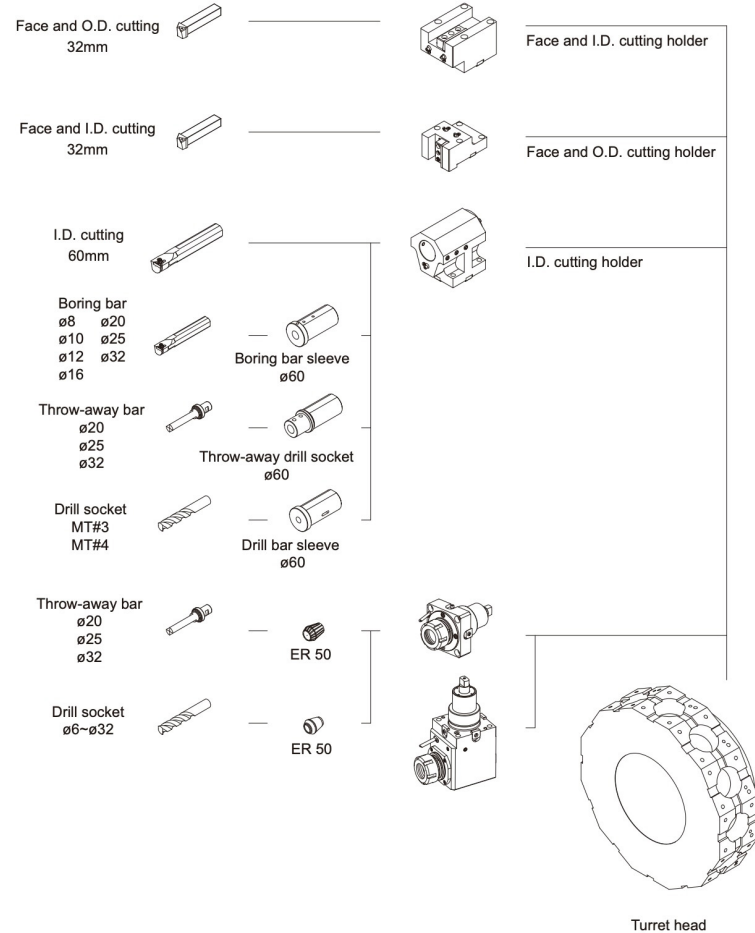
machine weight without chip conveyor	13000kg
machine length with chip conveyor	8500mm
machine width	2350mm
machine height	2300mm
total power consumption	50kVa

MAXCUT 117HTY INCLUDED/OPTIONAL TOOLING SYSTEM

Tooling System BMT-75(32mm)



Tooling System BMT-85(32mm) (option)





STANDARD + INCLUDED EQUIPMENT

- Fanuc Oi-TF Plus control
- 18" hydraulic 3-jaw chuck with a set of soft + hard jaws
- BMT-75 tooling system
- high pressure coolant system
- auto lubrication system
- work light
- hydraulic unit
- programmable tailstock
- fully enclosed splash/chip guarding
- auto lock/unlock door
- steel belt type lift-up chip conveyor with chip bucket
- Renishaw automatic tool setter
- heat exchanger integrated with electric cabinet
- tool box with adjusting tools
- leveling plates
- machine + control manuals

THE PRICING

MAXCUT 117HTY x 4M TURNING CENTRE PACKAGE PRICE: \$399,900US



TERMS AND CONDITIONS

The pricing

The shown pricing is in US Dollars F.O.B. Masteel Oakville warehouse. Applicable taxes are extra. CSA approval is included in the pricing. Lease + capital financing is available on approved credit.

The payment terms

30% with order, 60% before pick-up, 10% 30 days after delivery.

Warranty

Twelve (12) months.

Delivery

Six (6) months from the date of purchase, to be confirmed at the time of purchase.

Customer's responsibility

Provide a single concrete slab level foundation per the machine foundation requirements, power to the machine by a certified electrician and hydraulic + way lube oil plus coolant for the machine.

Masteel's responsibility

Assemble / level the machine on the customer's shop floor, complete the machine installation and accuracy test and one day of basic machine operator training.

Ontario Pre-Start Health and Safety Review (PHSR) is the responsibility of the customer and is not included in the above pricing.

Please note that this quote is subject to change without notice.

Sincerely,

MASTEEL AMERICA CORPORATION

Ron Nater
Manager, Eastern Canada
647.270.4434 / ron@masteels.com / www.ronnater.ca

